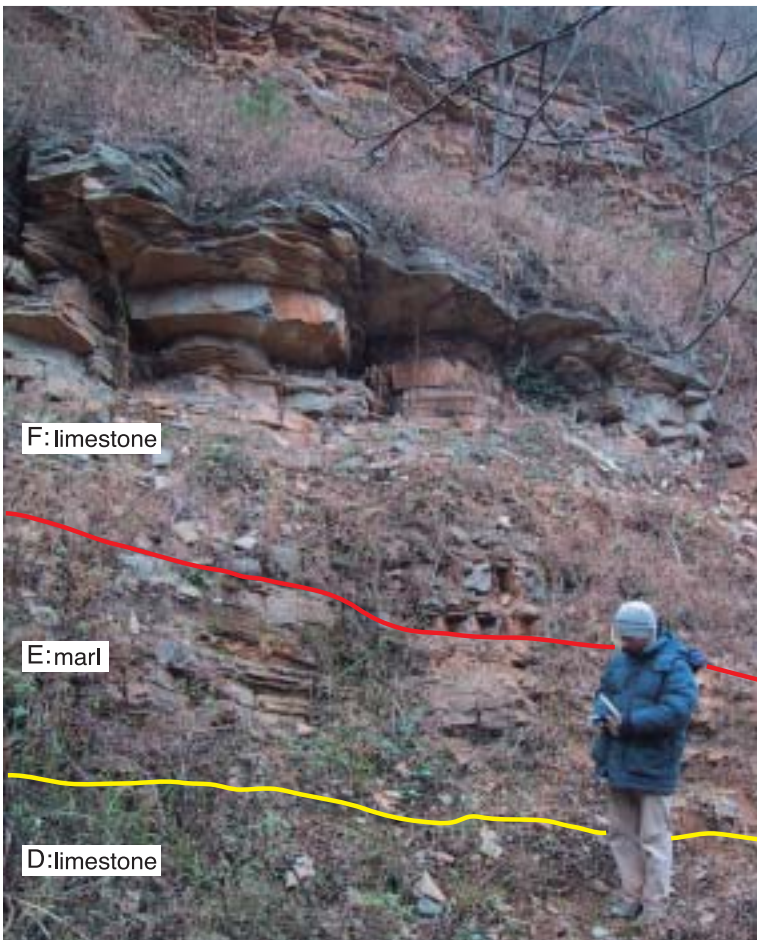


口絵 2 : 中国四川省北部朝天におけるペルム紀 - トリアス紀境界セクション
 Pictorial 2 : Permo-Triassic Boundary Section at Chaotian in Northern Sichuan, China



写真 1 嘉陵江東岸沿いの中部ペルム系茅口層、上部ペルム系呉家坪層・大隆層および下部トリアス系飛仙閣層。飛仙閣層の最下部にペルム紀 トリアス紀 (P-T) 境界が位置する。道路上の車 (円内) がスケール。写真 2 嘉陵江沿いの明月峡を南東から望む。写真 3 東岸の崖を掘り込んで作られた道路沿いの上部ペルム系層状石灰岩。

Photo 1 The Middle Permian (Maokou Formation) Upper Permian (Wujiaping F. and Dalong F.) and Lower Triassic (Feixianguan F.) rocks along the eastern side of Jialingjian river. The Permo-Triassic (P-T) boundary is located at the base of the Feixianguan F. A car on the road (in a circle) for scale. **Photo 2** The Mingyuexia gorge along Jialingjian river, viewed from southeast. **Photo 3** The Upper Permian bedded limestone along a road carved into vertical cliff.



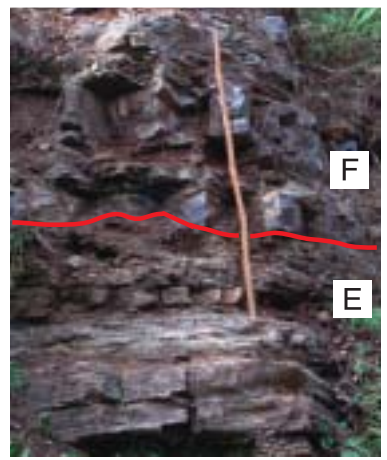
F:limestone

E:marl

D:limestone

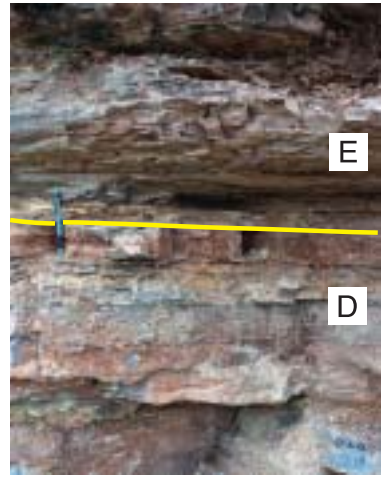
写真 4 ペルム紀化石の主要絶滅イベント層準(黄線)と生層序学的に定義される P-T 境界(赤線)。

Photo 4 The main extinction event horizon (yellow line) and biostratigraphically-defined P-T boundary (red line)



F

E

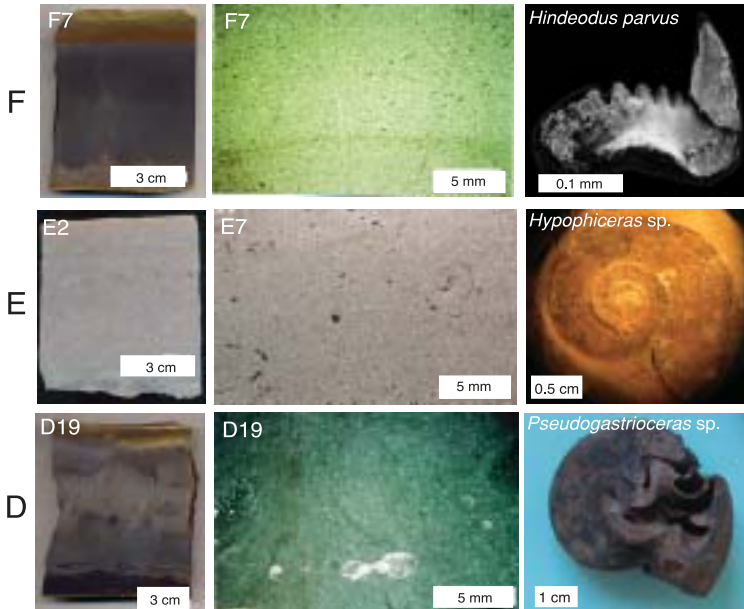


E

D

写真 5 絶滅イベント層準(ユニット D/E 境界:黄線)と生層序学的 P-T 境界(ユニット E/F 境界:赤線)の拡大. 各々, 1 m の折尺とペンがスケール.

Photo 5 Enlarged views of the event horizon (D/E boundary: yellow line) and biostratigraphically-defined P-T boundary (E/F boundary: red line) A 1 m long rod and a pen for scale, respectively.



F

E

D

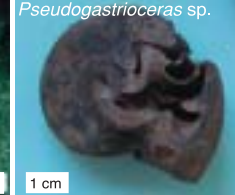
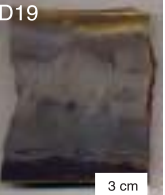
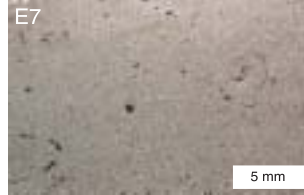
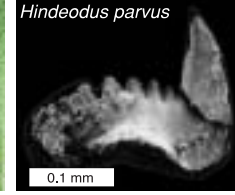
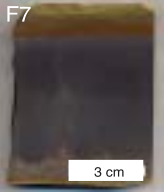


写真 6 P-T 境界周辺のユニット D, E 及び F の代表的岩石(研磨面・薄片)および化石.

Photo 6 Representative rock types (polished slab and thin section) and fossils of Units D, E and F around the P-T boundary.